

THE JEFFERSON JOURNAL

★☆☆ News from Jefferson Elementary School ★☆☆

Land Acknowledgement: We acknowledge that we are on the unceded lands of the Spokane Tribe. The Spokane people shared this place with other tribes through their relations, resources, history, trade, and ceremony. We thank the caretakers of this land, who lived, and continue to live here Since Time Immemorial. This land holds the knowledge, culture, and spirit of "The People of the River."



PRINCIPAL'S CORNER

VOTE
by
February 13
2024

SCAN HERE
TO LEARN MORE
spokane.k12.wa.us/bondlevy2024

Bond/Levy

↓ READ MORE ↓

At End of Journal

Good day to one and all,

In [last week's Principal's Corner](#), I shared some information about the upcoming bond and levy measures that voters are considering in this election cycle. I detailed some of the items that are funded by the local levy including lower class size, counselors, nurses, librarians and others. I also shared some information about the bond measure and the history of bond measures that included the building

of the current Jefferson Elementary School.

Today, I want to touch on two other topics that are important to voters, the cost of the measures and the new downtown stadium. Spokane Public Schools (SPS) has made a commitment to maintaining a predictable tax bill. With recent rises in property values, SPS has lowered the amount for the bond and levy from previous cycles so that residents will not see a rise in their tax bill in most cases. The graphic below provides some additional detail.

Next, there have been some questions raised about the building of the new ONE Spokane Stadium in downtown Spokane rather than at the Abli site in northwest Spokane that an advisory vote in 2018 had recommended. Since that advisory vote, the school board was approached by the Downtown Spokane Partnership with an offer to take over operations and maintenance of the stadium if it were built in downtown Spokane. This offer would save the school district over \$25 million during the stadium's projected 50-year life span. With this new information, the school board elected to

February 5, 2024

CALENDAR

February 5

PTG Hearts & Hands
Continues.
(Donated items to Thrive
International can be
brought to the Front
Office.)

Volleyball 3-4pm

Board Game Club
3-4pm

February 6

Variety Show Forms Due
(Extended from February
February 1)

Choir Ensemble 3-4pm

Leadership Club 3-4pm

PTG Panda Express Bite
Night 5-7pm
Panda Express on 29th
Ave.

February 7

Volleyball 3-4pm

Music & Movement
3-4pm

February 8

PTG Variety Show
Auditions KG-2
3:15-5:00pm

save money and build the stadium downtown. For more information on the stadium itself and the decision on where to build it [click here](#).

Make it a great week everyone. And don't forget to exercise your right to vote!

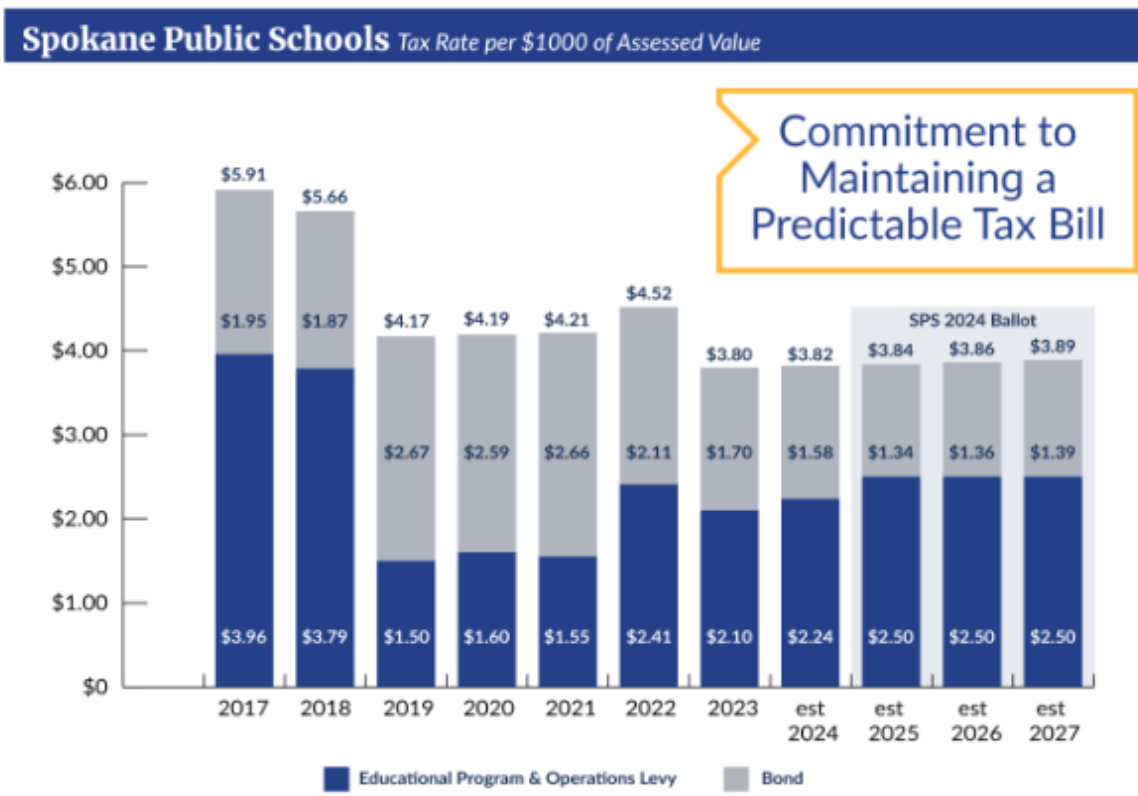
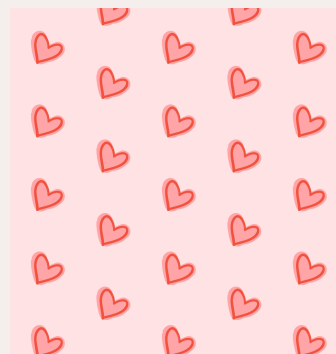
Brent




Brent A. Perdue (he, his, him)
Principal brentp@spokaneschools.org

Choir Ensemble 3-4pm

February 9
PTG Variety Show
Auditions Grades 3-5
3:15-5pm



- Judabean G.
- Elliott P.
- Stella P.
- Emarie P.-C.
- Andi W.
- Ryan S.
- Kinsley C.
- Hendrix V.
- Aaliyah S.



2023 - 2024
Scholar & Family Handbook

Jefferson Elementary School
123 E 37th Ave • Spokane, WA 99203
Phone: 354-3200 • Fax: 354-3210
Attendance Hotline: 354-3202
www.spokaneschools.org/jefferson

FROM YOUR
Jefferson Scholar & Family Handbook

Mary D.
Emerson D.-L.-F.
Orin J.
Emma N.
Tesla M.

(located on the Jefferson Website in the "Students" dropdown menu or [click here](#))

Extracurricular Activities-page 10

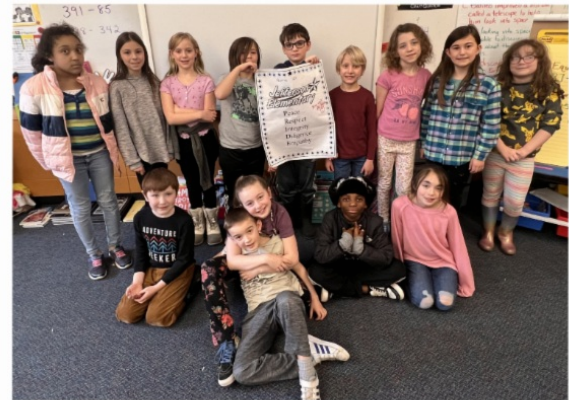
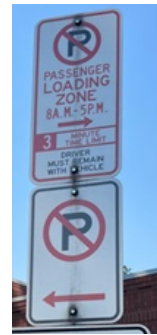
In addition to school activities and events, Jefferson offers extracurricular activities in which students may wish to participate.

These activities range from sports of all sorts to book clubs, art classes, chorus and many more choices. There is no cost for students to participate. Information, schedules and sign-up sheets are sent home at the beginning of the session. Return your sign-up sheets promptly as classes are filled based on a lottery drawing from all on-time registrations.



Staying Safe During Pick-Up and Drop-Off

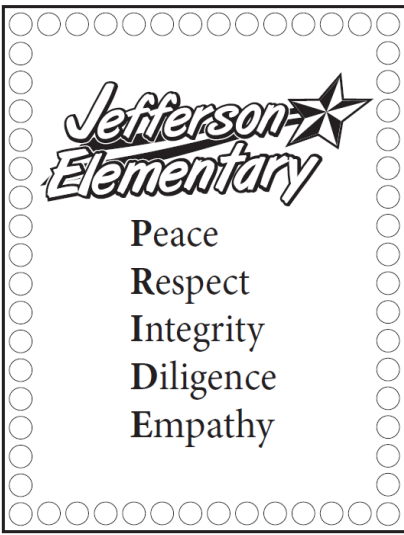
Families are asked to abide by the posted signs to help before and after school run smoothly. This area is a passenger loading zone and the driver must remain with the vehicle. Beginning last Monday, friendly reminder notes began to be added to cars that do not follow the posted expectations. Cars that are found to repeatedly violate posted expectations will be referred to building administration for follow-up.



PATRIOT PRIDE

Congratulations to **Mrs. Zellers' Kindergarteners** and **Mrs. Norris' 4th graders** for recently filling up the 60 spaces on their classroom PRIDE posters!

Classrooms at Jefferson can earn stickers for their PRIDE posters when they collectively meet PRIDE expectations across the building. When their



poster is filled with stars, classes receive a Smart Snack compliant treat and extra recess with Mr. Perdue or Mrs. Gage and Millie, Jefferson's emotional support dog. The five PRIDE expectations include: **P**eace, **R**espect, **I**ntegrity, **D**iligence and **E**mpathy.

Attendance Fact File

At Jefferson Elementary, we want to see every scholar at school every day! Check out these statistics about the importance of being at school.

ATTENDANCE MATTERS

every school day counts.



Chronic absenteeism is defined as missing 10% of school days for any reason. Chronic absenteeism is predictive of dropout beginning as early as 1st grade. Students who eventually drop out of school missed an average of 16 days of 1st grade. For each additional day that a student was absent in 1st grade, the likelihood of dropping out increased by about 5 percentage points.

RELATIONSHIPS

Students who are frequently absent may find it difficult to build meaningful relationships with peers and with staff.

BEHAVIOR

Students who are frequently absent often have difficulty tracking with the academics they missed in class which can lead to frustration and acting out.

COMMUNITY

Chronically absent students impact the pacing of instruction for the whole class due to the need for teacher attention for remediation and individual instruction.

MINDSET

If students do not develop the habit of attending school (other than when they are ill), they are less likely to be at work regularly and on time when they enter the work force.

DID YOU KNOW?

Students who miss 10% or more of the school year scored approximately 5 percentage points lower on reading, math and general knowledge assessments than peers with low rates of absenteeism. 10% might sound like a lot, but when you consider things like illness and trips, they days add up fast!



SACAJAWEA
MIDDLE SCHOOL



Attention 5th
Grade Families
Join us for:

FUTURE THUNDERBIRD NIGHT!

WEDNESDAY, FEBRUARY 21ST
5 - 8PM

Parent Info + Curriculum Fair!

**FUTURE 6TH GRADER
PARENT PRESENTATION**

@ 6:45PM

Check out mini-sessions and curriculum fair before or after the 6:45pm future 6th grader presentation.

2024-
2025

SCAN HERE

IMPORTANT REGISTRATION DATES...

Friday, February 9th: Look for Sac News You Can Use, which is sent to families in our data base

Wednesday, February 21st: Thunderbird Parent Info Night @ Sac 5-8pm

Week of February 26 - 29: 5th Grade "Road Show" - Sac counselor visits Elementaries

Monday, March 4th: Completed registration forms picked up from Elementaries



www.sacthunderbirds.com



Jefferson Coat Cart

- Mission: to keep kids warm during the winter
- What: we are creating a cart that holds winter clothes for kids to borrow during recess to keep them warm throughout recess. It would be like a coat library.
- Why: It is scientifically proven that being outside helps child development. Some kids do not have warm clothes, and others might forget theirs at times.
- Help: We are asking for donations for the coat cart: coats, mittens, gloves, snowpants, boots etc. Anything helps. Please note that all donations need to be tagged with parent permission. Thanks again,

- The Jefferson Student Coat Cart Team

THE PTG SCOOP

PTG Upcoming Events

February 1-14

Hearts & Hands Service Project
Supporting Thrive International

February 6

Variety Show Forms Due
(Extended from February 1)

Bite Night

Panda Express 29th Ave
5-7pm

February 8

Treats for Staff
Treats for Staff Sign Up Genius

February 8 & 9

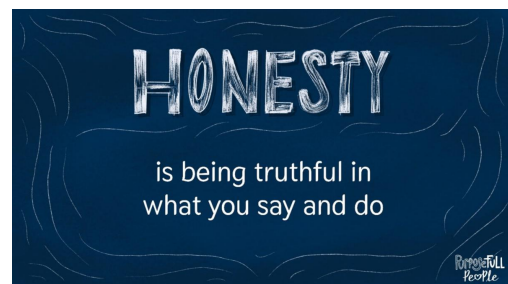
Variety Show Auditions
3-5pm

February 13

PTG Meeting, 6:30pm

February 29

Reading Night
"Leap Into Reading"
6-7:30pm



Spokane Public Schools

School Facility Bond & Replacement Levy Election

February 13, 2024

What is a school levy?

Levies support essential programs, staff, and services that provide students with a quality education.

The 2024 Educational Programs and Operation Levy replaces the expiring 2021 levy.

The levy helps to provide an educational experience that our community has grown to expect to meet student needs by funding extracurricular activities, special education programs, critical health and wellness services, and other student programs and supports.

Levies support programs and services benefiting all schools

- Athletics
- Arts, Music, and Drama
- Nurses
- Counselors
- Advanced Placement Courses
- Special Education
- Behavior Specialists
- Technology Support
- Smaller Class Sizes
- Highly Capable Programs
- Librarians
- Custodians
- Intervention Programs

What is a school bond?

Bonds support buildings – they pay for facility and security improvements. They cannot be used to operate schools and fund programs.

Bonds require 60% approval, and 40% of voters from the prior general election for validation.

What does the 2024 bond do?

- Modernizes and replaces a few older schools and make smaller improvements across the district while keeping the tax bill predictable.
- Continues Spokane Public Schools' proven history of constructing and maintaining durable, well-designed school buildings.
- Protects and maintains the community's investment in school buildings, keeping the district's long-range replacement and modernization plan on course.



VOTE
by
February 13
2024



**Commitment to
Maintaining a
Predictable Tax Bill**



VOTE
by
February 13
2024

SCAN HERE TO LEARN MORE
spokaneschools.org/bondlevy2024

- ### 2024 Major Bond Projects
- Adams Elementary Replacement
 - Madison Elementary Replacement
 - North Central High School Modernization of Old Section
 - Garry Middle School Modernization and Addition
 - Chase Middle School Improvements
 - Spokane Public Montessori and Libby Center Upgrades
 - The Community School Improvements
 - Balboa and Indian Trail Elementary Full Redesign

Spokane Public Schools complies with all federal and state rules and regulations and does not discriminate in the admission, treatment, employment, or access to its programs or activities on the basis of age, sex, marital status, race, color, creed, national origin, the presence of any sensory, mental, or physical disability, to the use of a trained guide or service animal by a person with a disability, sexual orientation including gender expression or gender identity, or honorably discharged veteran or military status. This holds true for all students who are interested in participating in educational programs and/or extracurricular school activities, and provides equal access to the Boy Scouts and other designated youth groups.

Inquiries regarding compliance and/or grievance procedures may be directed to the school district's Title IX/Staff Civil Rights Officer, ADA Officer, Harassment, Intimidation, Bullying (HIB)/Student Civil Rights Officer and/or 504 Compliance Officer.

- The following Civil Rights Compliance Coordinators have been designated to handle questions and complaints of alleged discrimination:
- Civil Rights Coordinator and Title IX Coordinator: Jodi Harmon, 509.354.7344
 - Section 504 Coordinator: Melanie Smith, 509.354.7284

[Unsubscribe kevind@spokaneschools.org](#)

[Update Profile](#) | [Constant Contact Data Notice](#)

Sent by natalief@spokaneschools.org powered by



Try email marketing for free today!